

PREMIUM



**Saskatchewan
Ministry of
Agriculture**

EVENT



UNIVERSAL

Elanco Animal Health

Farm Credit Canada

Genetiporc

George Morris Centre

Masterfeeds

Merck Animal Health

Peak Swine Genetics Inc.

Prairie Hog Country

RBC Royal Bank

Saskatchewan Food Industry Development Centre Inc.

Saskatoon Processing Co.

Sask Power

SaskTel

Thunder Creek Pork

Warman Veterinary Services

Western Financial Group

Western Hog Journal

Agriculture is life

Wherever you find Canadian agriculture, you'll find FCC

Canadian producers rely on people who understand agriculture. FCC financing is designed for them.

1-888-332-3301 www.fcc.ca

 **Farm Credit Canada**
Advancing the business of agriculture

Canada



**Saskatchewan Food Industry
Development Centre Inc.**

**The Food Centre has the services,
expertise and facility to help you
explore new market opportunities!**

www.foodcentre.sk.ca info@foodcentre.sk.ca (306) 933-7555

Product Development: New and improved value-added pork products
(new ingredients, low salt, reduced fat, improved texture, etc)

Interim Processing: Federal facility and state-of-the-art technology to access new markets
outside of Saskatchewan

Training and Education: Onsite, online and workshops on food safety (HACCP, ISO, BRC, etc.)

Technology Transfer: Evaluating, transferring or customizing existing technology





"Premium Canadian Softwood Shavings"
Edmonton, AB Canada

- Increase your satisfaction with better price point
 - High quality product
 - Increase your margins
- Medium Flake and Large Flake available
- Expected delivery within 7-10 days upon ordering

We supply best in class facilities

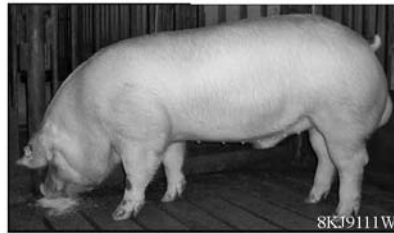
Farms ** Livestock ** Hauling
in Canada and United States

Toll Free Phone 866-464-4252

Email: lindap@norstarindustries.com



**Committed to
producing pigs
superior in the
industry!**



Challenger Boar

73.0 mm loin depth

We're *Challenging* carcass
quality with our *Challenger* boar.

PEAK SWINE GENETICS
#217, 5906 - 50 Street Leduc, AB
Phone: 780.986.4647 Fax: 780.986.4694
E: peak@peakswine.com W: www.peakswine.com

Toll Free 1-888-235-7325



RBC Royal Bank®

Specialized financial advice to help your farm succeed.

RBC® has a dedicated team of account managers, specializing in financial services for agriculture.

To start a conversation with an agriculture specialist, visit rbcroyalbank.com/agriculture

Terry LaRocque, Agriculture Specialist
(306) 933-3515 / terry.l.larocque@rbc.com



Advice you can bank on™

® Registered trademarks of Royal Bank of Canada. RBC and Royal Bank are registered trademarks of Royal Bank of Canada.
™ Trademarks of Royal Bank of Canada 40036 (02/2010)

4G network

– Built and Powered by SaskTel



Join the happiest customers on Saskatchewan's largest and fastest 4G network!

With coverage to over 98% of the province's population, 11 SaskTel Stores and 133 Authorized Dealer locations wherever you need them, and all the latest phones and devices, you're always connected with SaskTel.

■ 4G Coverage – May 31, 2011 ■ 4G Coverage – December 31, 2012

Visit a SaskTel Authorized Dealer or SaskTel Store | 1-800-SASKTEL | sasktel.com

SaskTel 
Your Life. Connected.™

Happiest customer research sourced from SaskWatch Research™ online panel, comprised of over 10,000 Saskatchewan residents and includes a random sample of telecommunications customers. SaskTel received the largest number of high satisfaction ratings compared to other wireless providers, as of the first quarter of 2011. Comparing SaskTel 4G network service to Rogers RSPA+ network service, based on SaskTel test of average upload and download speeds in large Saskatchewan centers. Mobile internet access speed provided by the network operator may vary due to the device being used, network congestion, distance from the cell site, topography, environmental conditions and other factors. Speed on the Internet is beyond the wireless network, operator's control and may vary with your configuration, Internet traffic, website server and management policies, and other factors. 4G not available in all areas. The coverage areas shown are approximate. SaskTel cannot guarantee that coverage will be exactly as shown since factors beyond our control also affect coverage. These include weather conditions, terrain, your distance from a cell tower, and whether the cell is being used indoors or outdoors. Saskatchewan coverage as of May 31, 2011. Coverage areas outside of Saskatchewan are subject to change without notice. Long distance charges apply outside local calling areas. Rates vary depending on service plan.